



FOR LEASE

412-418 N. MAIN ST., EULESS, TX, 76039

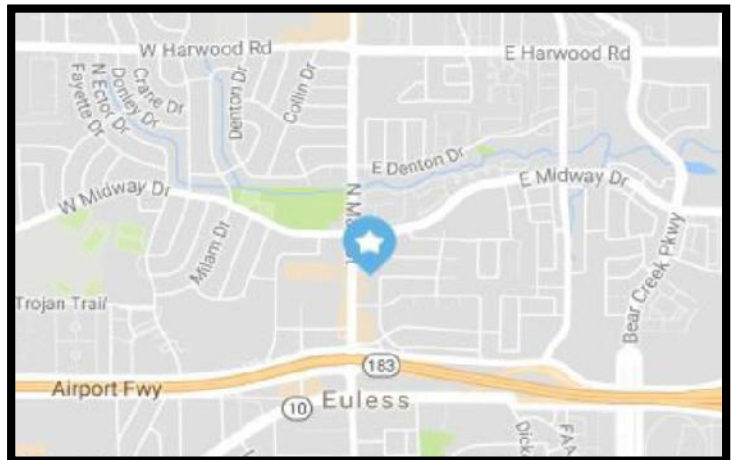
EULESS MAIN VILLAGE

Available Space	
Suite 209	1,510 SF
Suite 210	2,006 SF

Asking Rate	\$13 PSF + E
Building Size	9,578 SF
Available Space	1,510 – 2,006 SF

PROPERTY FEATURES

- Two-story garden office building
- Ample parking
- Conveniently accessible to Hwy 183
- Tenant signage available
- Below-market rental rates

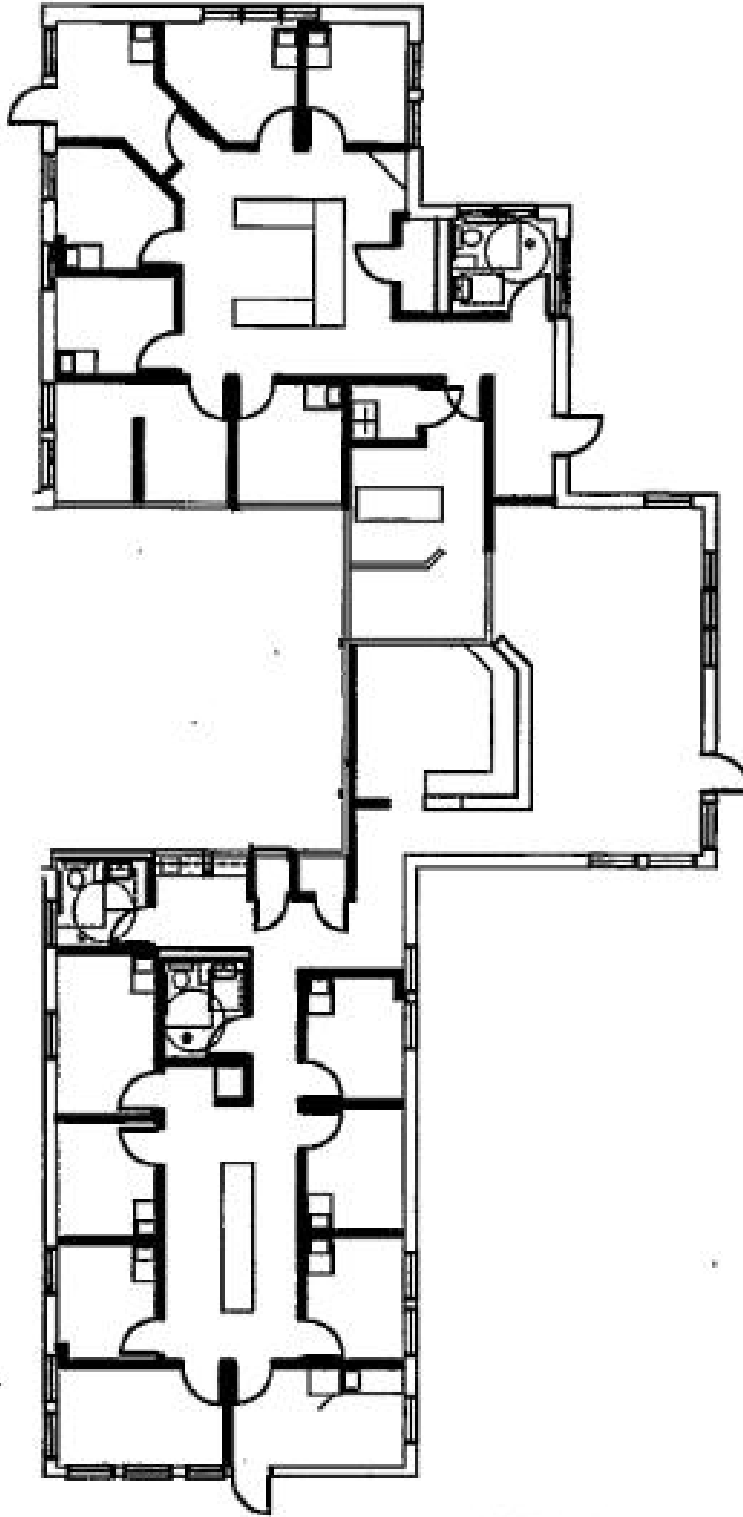


BEAUX RILEY
 Senior Vice President
 817.226.0000
BRiley@AdvisorsTX.com

2000 E. Lamar Blvd.
 Suite 710
 Arlington, TX, 76006
www.AdvisorsTX.com

The information contained herein was obtained from sources deemed to be reliable ; however, Advisors Commercial Real Estate makes no guarantees, warranties, or representations as to the completeness or accuracy thereof.

ADVISORS
 COMMERCIAL REAL ESTATE



412 N. MAIN SUITE 100
3,906 RSF.

